



# User Manual

## TRIPLEX

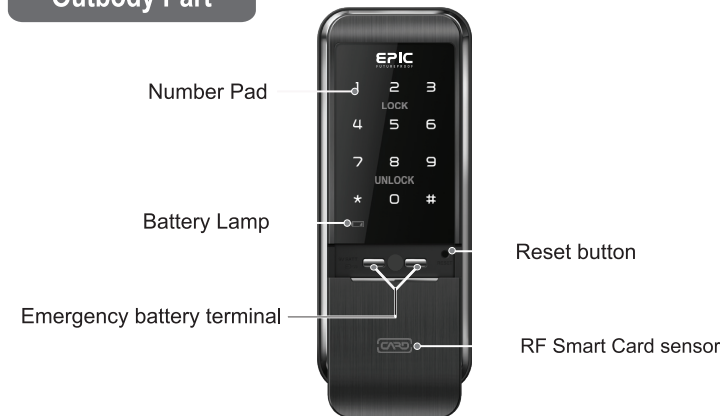
### 2WAY

[www.epic.co.kr](http://www.epic.co.kr) [info@epic.co.kr](mailto:info@epic.co.kr)

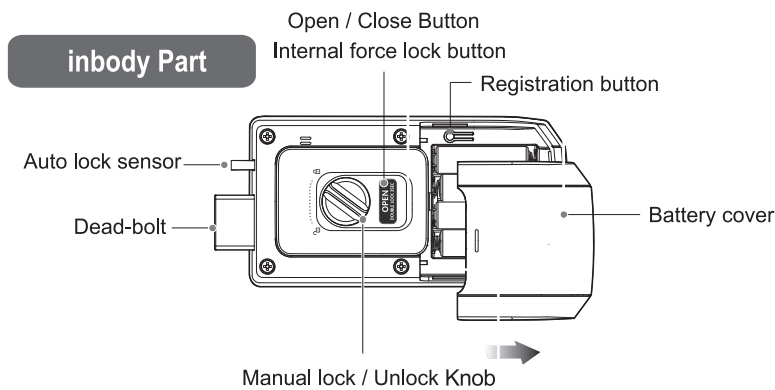


This product should be installed by skilled installer only  
To receive full coverage of the product warranty.  
Please do not install by yourself, For safety purposes.

#### Outbody Part



#### Inbody Part



#### Product Specification

Items		Descriptions
Installation conditions	Door thickness	30~50mm
Authentication Method	No. of password	4~12 digits
Power supply	DC 6V	LR 6 AAALKALINE (X4) EA
Emergency Battery	DC 9V	ALKALINE BATTERY (SOLD SEPARATELY)
Temperature	Sensor temperature	72°C ± 5°C Maximum Temperature 62°C ± 5°C Normal Temperature
	Material	Outbody AL, ZN, PC Inbody AL, ZN, ABS

#### RF Specification

Items	Frequency	Channel	Module	Public Line power
RFID	13.56 MHz	1EA	ASK	93.5DBU/m@10m Below

#### ⚠ Safety precautions

- ▶ use it after reading the user's guide and change your password regularly.
- ▶ use only new batteries and Alkaline type when replacing batteries.
- ▶ do not disassemble, install, or repair this product on your own.
- ▶ to clean, use only dry microfiber towel.
- ▶ do not insert pin or any sharp material that can damage the button.
- ▶ do not allow water to enter the product, do not apply excessive shock to the product.

#### After Service

1. When the consumer damage the item, there will be additional payments regarding the regulations as shown below in accordance with the product warranty.
2. Product should be installed only by a professional installer.
3. In case of emergency should call the customer service center.

PTSP1832ONTA REV.03

#### Multi-touch Feature

**Note** This is a security feature that prevents the password from being exposed, by removing traces of fingerprint patterns on the number pad. The multi-touch feature is disabled in default.

- 1 Touch the [Number Pad] on the Outbody, Enter the Pin number. Press the [\*] button.

- 2 Press the [5] button on the number pad. A melody will be heard and Multi-touch feature setting is complete.

To cancel the setting, just repeat steps ①, ②.



**Caution** When multi-touch feature is enabled, after entering pin number Press the 3 digit number that is displayed on the screen Press [\*] button and the door will open When this feature is enabled, the Random number feature is cancelled

※ Random number feature is enabled in default. This is a security feature that keeps the pin number from being exposed by the additional Random number that is added before or after the original pin number The number to be entered including the pin number should not exceed 20 digits.

#### Opening door by using Random number

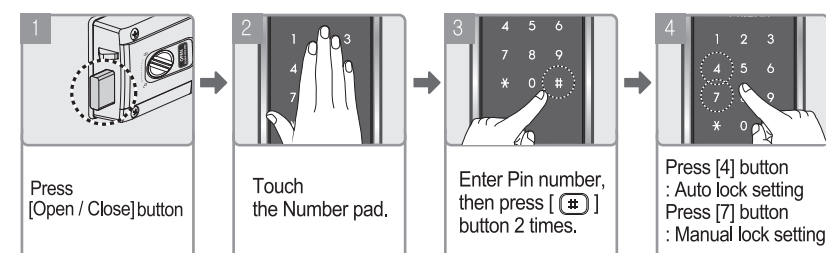
Touch the number pad, enter any random number, Enter pin number, press [\*] button or Enter pin number first, then enter any random number, Then press [\*] button And the door will open

4

#### Automatic / Manual Lock Setting

Sets the door locking mode to Manual or Automatic Lock Mode

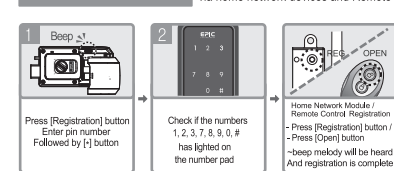
##### Setting Manual / Automatic Mode



**Note** Automatic mode is set in default. When you set the manual lock, The door will not automatically lock after closing the door. You need to press [Open/Close] button inside or Touch the number pad outside to close the door

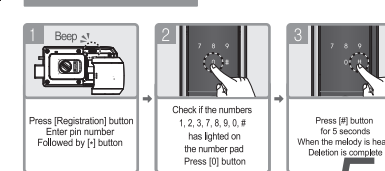
#### Home Network Module & Remote Control Setting (Optional Settings)

##### Registration



For registration of additional remote control Repeat step number 2 Up to 5 remote controls can be registered

##### Deletion



New registration of single remote control will delete previously registered ones. This method can be used as alternative in deleting remote control

5

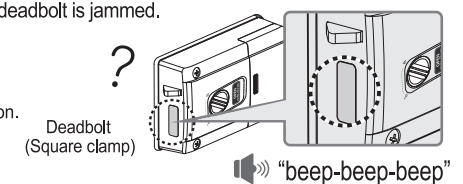
#### Anti-Prank & 1 Minute Lock

5 times repeated failed [Pin Number] entry will activate a series of alarm and the lock will not function for 1 minute.

#### Deadbolt Error Alarm

When the door is not closed properly or the deadbolt is jammed. A series of alarm will be activated 3 times.

※ In case the alarm doesn't stop contact customer service and ask for assistance. Service cost may occur based on service location.



#### Replace Battery Alarm

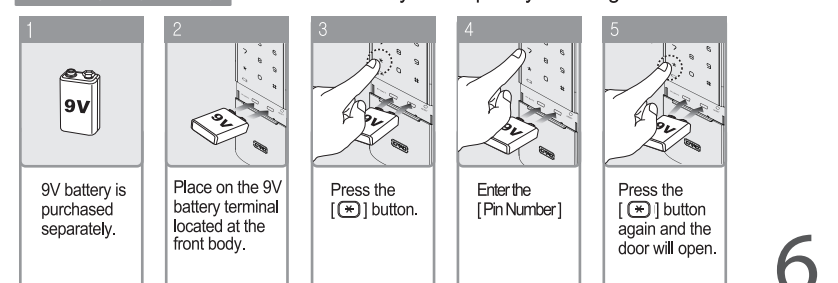
##### Replace Battery

During normal operation and a series of alarm is heard, it indicates the need for battery replacement. Please replace all battery with new ones at this time.



##### Emergency Battery

When the battery is completely discharged



6

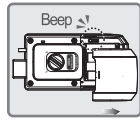
## 1 Pin Number Registration

**Caution** Please perform registration while door is open.  
Upon purchase, Default pin number registered is 1,2,3,4



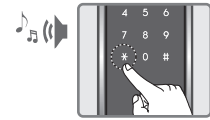
※ To change existing pin number

- 1 Open the [Battery Cover]  
Press [Registration] button once the 'beep' sound will be heard.



OUTSIDE

- 2 Enter current pin number followed by [\*] button.



OUTSIDE

- 3 Check if the numbers 1, 2, 3, 7, 8, 9, 0, # has been lighted on the number pad.  
Press number 1 button.



OUTSIDE

- 4 Enter new pin number to be registered. Press [\*] button. And the new pin number has been registered. When the melody is heard, the registration is complete.

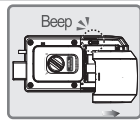


**Note** Only 1set of Pin Number can be registered

**Caution** After pressing Registration button, Pin Number should be entered within 10 seconds or the registration will be cancelled.  
New registration (steps ①, ②, ③, ④) will delete all previously registered pin on the lock.

## 2 Smart Key Tag Registration (Normal)

- 1 Open the [Battery Cover]  
Press [Registration] button once the 'beep' sound will be heard



OUTSIDE

- 2 Enter current pin number followed by [\*] button.



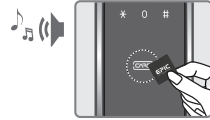
OUTSIDE

- 3 Check if the numbers 1, 2, 3, 7, 8, 9, 0, # has been lighted on the number pad.  
Press number 2 button.



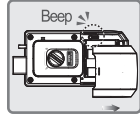
OUTSIDE

- 4 Place smart keys to be registered on the card reader (A beep sound will signal registration of each card)



INSIDE

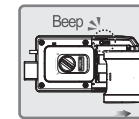
- 5 Press [Registration] button after all cards has been registered. And the registration is complete.



**Note** Up to 100 Smart keys can be registered. To register multiple smart keys, repeat step ④ before the number pad turns off. Place smart keys on the card reader within 10 seconds after pressing [Registration] button or the registration process will be cancelled. No more smart keys registration is possible on registering 100th smart key.

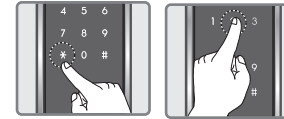
## 3 Smart Key Tag Registration (Individual)

- 1 Open the [Battery Cover]  
Press [Registration] button once the 'beep' sound will be heard.



OUTSIDE

- 2 Enter current pin number, followed by [\*] button.  
Check if the numbers 1, 2, 3, 7, 8, 9, 0, # has been lighted on the number pad.  
Press number 2 button.



OUTSIDE

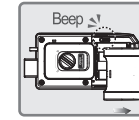
- 3 Enter the card location number consisting of 3 digits from (001~100), followed by The [#] button.



Place the card to be registered on the reader.  
The beep sound will be heard, and the saved 3 digit location number will be displayed on the number pad.

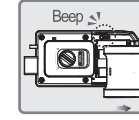
INSIDE

- 4 Press [Registration] button after all cards has been registered. And the registration is complete.



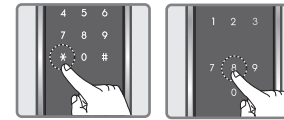
## 4 Smart key Delection ( All-at-once )

- 1 Open the [Battery Cover]  
Press [Registration] button once the 'beep' sound will be heard.



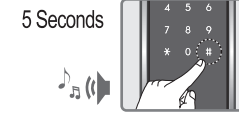
OUTSIDE

- 2 Enter current pin number, followed by [\*] button.  
Check if the numbers 1, 2, 3, 7, 8, 9, 0, # has been lighted on the number pad.  
Press number 8 button.



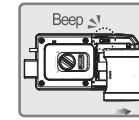
OUTSIDE

- 3 Long Press [#] button for 5 seconds  
When the melody is heard,  
All smart keys are deleted.



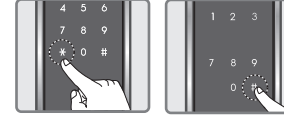
## 5 Smart key Delection ( Individual )

- 1 Open the [Battery Cover]  
Press [Registration] button once the 'beep' sound will be heard.



OUTSIDE

- 2 Enter current pin number, followed by [\*] button.  
Check if the numbers 1, 2, 3, 7, 8, 9, 0, # has been lighted on the number pad.  
Press number 8 button, followed by [#] button



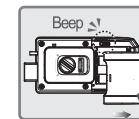
OUTSIDE

- 3 Enter the registered card location number, followed by [#] button



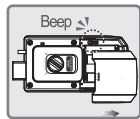
INSIDE

- 4 After deletion is complete, all numbers are lighted on the number pad. Additional card deletion is in standby mode. If there is no location number to be deleted, press [Registration] button.



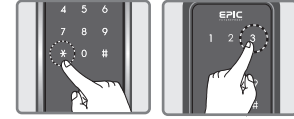
## 6 Guest Pin number Registration

- 1 Open the [Battery Cover]  
Press [Registration] button once the 'beep' sound will be heard.



OUTSIDE

- 2 Enter current pin number, followed by [\*] button.  
Check if the numbers 1, 2, 3, 7, 8, 9, 0, # has been lighted on the number pad.  
Press number 3 button.



OUTSIDE

- 3 Enter New Guest Pin Number to be registered (4~12 digits)  
And press [\*] button to complete the registration.

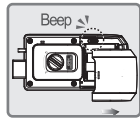


- ◆ The guest pin number is 1 time entry only.
- ◆ New registration will delete old guest pin number.
- ◆ When registration mode is cancelled old pin number will be restored.

## 7 Dual-mode Security Feature Setting

The Pin number & Smart key should be registered first before setting this feature

- 1 Press [Register] button for 5 seconds  
The entire LED will light up after 3 seconds the alarm will stop  
And after 2 seconds it will be on again.
- 2 Enter current user password.  
When you press [\*] button,  
The front panel LED will blink and light-up.



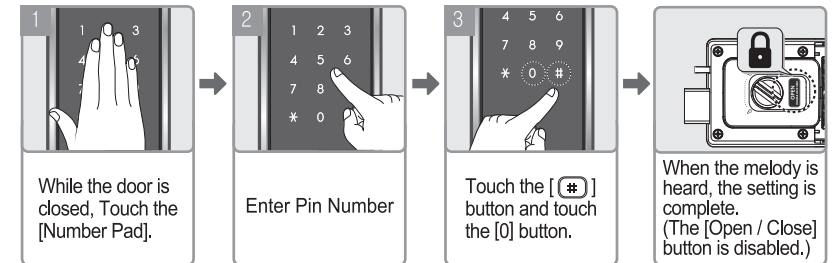
- 3 Press [1] button to Turn-Off Dual-Mode Security  
Press [3] button to Turn-On Dual-Mode Security.



During Dual-Mode Security Setting,  
when the confirmation sound is heard,  
everything will be turned-off

## 8 Force Lock Setting

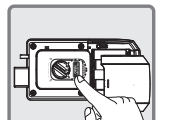
- 1) Outside Force Lock  
- When this is set the door cannot be opened from the inside. [Open / Close] button is disable.



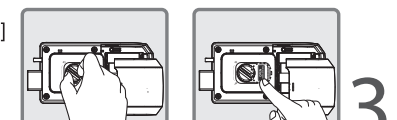
**CANCEL** Open the door by pin number and the [Force Lock] setting will be cancelled

- 2) Internal Force Lock  
- When this is set the door cannot be opened from the outside.  
Pin number entry is disabled.

- 1) While the door is closed
- 2) Press the [ Safety button ] for 3 seconds.  
When the melody is heard, the setting is complete.



**CANCEL**  
Open the door by the [Manual Lock/unlock knob]  
or by the [Open/Close] button inside  
and the [Force Lock] will be cancelled.



3